

End of Line Packaging Solutions

Case Erector for RSC Cases



The Case Erector is a heavy duty powerhouse as shown below. Its continuous motion drive performs case forming and case sealing operation. Using PLC electronics to control the operations and document the performance of the machine, this case erector is also operator friendly with touch screen controls.

Standard tape sealing; Hotmelt optional

Features:

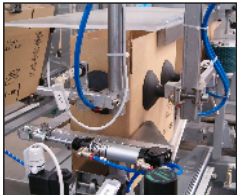
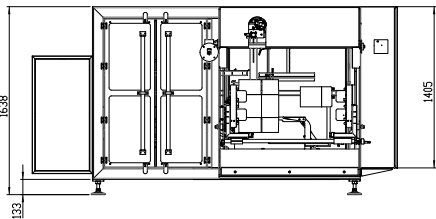
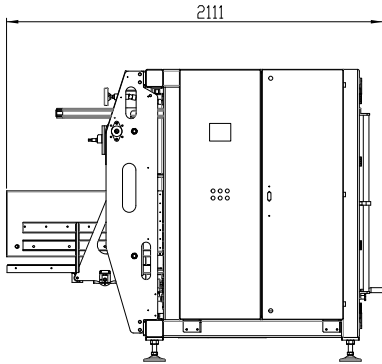
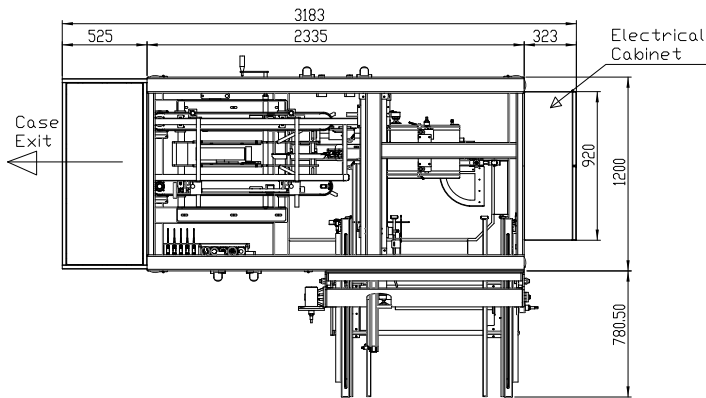
- Carton magazine, capacity about 70 – 110 cartons, with minimum level alarm and automatic cartons align device
- Pneumatic driven cartons extraction device
- Pneumatic lower flaps closer
- Bottom Sealing with tape
- Squaring device
- Change over is based on hand wheel adjustments with mill metric reference points
- Average C/O time 10-15 min



Technical specifications:

Power consumption	2 kW
Power supply	400 V , 3Ph+N+G
Frequency	50 Hz
Air pressure	6 bar
Air consumption	120 NI/min
Nominal production	10 - 40 cases/min
Operation temperature	25 - 50°C
Accepted cartons dimensions:	Min 350 x 180 x 200 H mm Max 520 x 350 x 400 H mm

Disclaimer: All specifications, design and characteristics shown in this catalogue are subject to change without prior notice



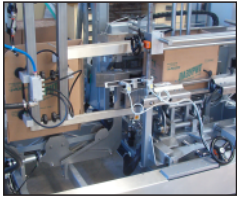
Positive case feeding



Quick size adjustments



Precision case opening



Square sealed cases

Email: info@clearpack.com | Website: www.clearpack.com